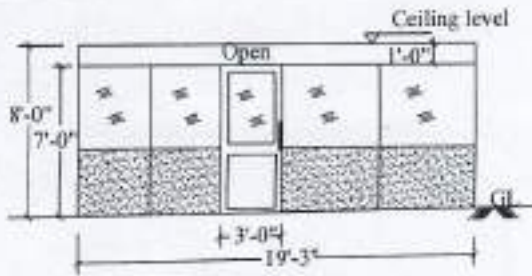


SPECIFICATION FOR FABRICATING AND PARTITIONING OF EMERGENCY OPERATION CENTRE, IT SECTION AND MILITARY COORDINATING SECTION AT DMC.

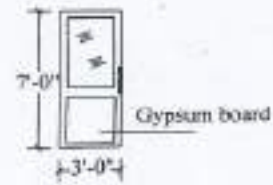
ITEM	DESCRIPTION	UNIT	QTY	RATE	AMOUNT
	The bidder can visit/inspect the site and surrounding conditions for employment of labour, using of plant/equipment, execution of work etc. All necessary information can be obtained from Procurement section , Disaster management center, Colombo 07. The cost of such visits shall be borne by the Bidder.	Note			
	All measurement should be obtained at the site concurrence with the client prior to quote all the work as per the attached detail Drawing.	Note			
	All replacing doors and additional 10 glasses (4'-10" x 2'-5" Thick ness 5mm) are available at the site and same items are to be utilized for the above task. Further removing aluminum parts, gypsum boards and glasses are to be reused for the fabricating of new partitions. If the bidder is using new items approval to be obtained for a sample of each item from the Client prior proceeding all the work.	Note			
	All ironmongery shall satisfactorily perform the function and shall be securely attached to partition and should be of stainless steel, die-cast alloy or other non-corrosive materials compatible with existing materials	Note			
	Aluminium work - All newly fabricating sections to be used imported extruded Aluminium alloy parts, ALCOM Malaysia powder or equivalent coated to 60-80 micron as per BS 6496-1997 and white colour . And the minimum thickness of the extrusions should be not less than 1.5mm. Also provide the copier of test certificates for strength water and air tightness for selected systems.	Note			
	Surface of both sides of partitions fabricated with standard gypsum boards (Gage 10mm) and to be paint with approved colour and complete as per directed by the Client.				
	Provide at least 01 year guarantees after completion of works. Project Duration will be - Seven Calendar Days (07 Days)				
	All removing, modifications and partitioning should be arranged as per the detailed drawing and all damages which caused due to the construction to be repaired.(floor, ceeling .etc) and all fittings, locks, hinges, handles, door closers are to be worked properly.	Note			
	Payments to be measure & pay basis and VAT condition to be included in the quotation.	Note			

A - ALUMINIUM WORK					
A - 1	Fabrication and fixing of partition up to 8'-0" height, aluminium frame comprising panel with both side Gypsum board and 5mm thick glass, as per detail Drawing (Partition type - A) & approved by the Client . (Aluminum Door available)	Sqft	160.0		
A - 2	Fabrication and fixing of partition up to 8'-0" height, aluminium frame comprising panel with both side Gypsum board as per detail Drawing (Partition type -B) & approved by the Client. (Aluminium glass Windows & Doors available)	Sqft	440.0		
A - 3	Fabrication and fixing of partition up to 8'-0" height, aluminium frame comprising panel with both side Gypsum board as per detail Drawing (Partition type -C) & approved by the Client. (Aluminium Door available)	Sqft	66.0		
A - 4	Fabrication and fixing of partition up to 8'-0" height, aluminium frame comprising panel with both side Gypsum board as per detail Drawing (Partition type -D) & approved by the Client. (Aluminium Door available)	Sqft	65.0		
A - 5	Fabrication and fixing of partition up to 8'-0" height, aluminium frame comprising panel with both side Gypsum board and 5mm thick glass with sand blast Sticker, as per detail Drawing (Partition type - E) & approved by the Client.	Sqft	94.0		
A - 6	Fabrication and fixing of partition up to 8'-0" height, aluminium frame comprising panel with both side Gypsum board and 5mm thick glass with sand blast Sticker, as per detail Drawing (Partition type - F) & approved by the Client.	Sqft	78.0		
A - 7	Fabrication and fixing of partition up to 8'-0" height, aluminium frame comprising panel with both side Gypsum board as per detail Drawing (Partition type -F) & approved by the Client. (Aluminium Door available)	Sqft	64.0		
A - 8	Fabrication and fixing of partition up to 8'-0" height, aluminium frame comprising panel with both side Gypsum board as per detail Drawing (Partition type -G) & approved by the Client.	Sqft	10.0		
A - 9	Fabrication and fixing single sash door , 5mm thick plain glass with sand blast sticker on top and gypsum board at bottom. door in size D8 - 3'-0" x 7'-0" height with aluminium frame comprising with all accessories such as door lock, door closer etc,as approved by the Client. (Partition type -G)	Nos	1.00		

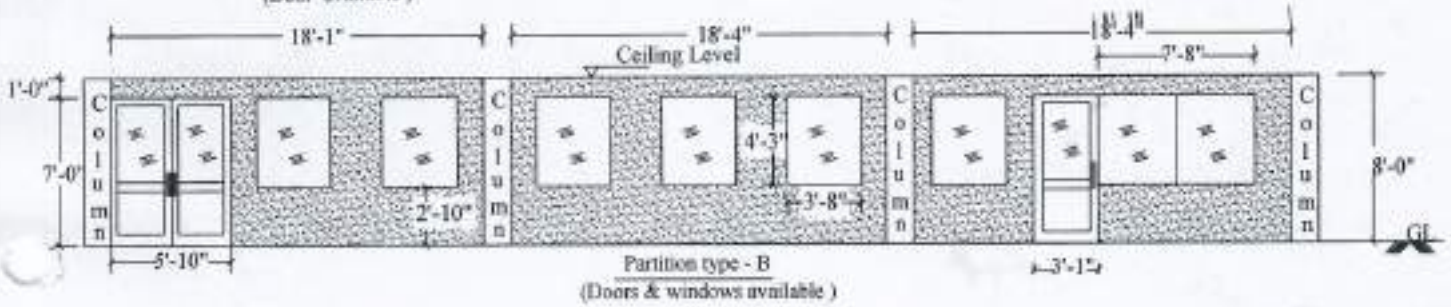
A -10	Fabrication and fixing of partition up to 8'-0" height, aluminium frame comprising panel with both side Gypsum board as per detail Drawing (Partition type -H) & approved by the Client. (Aluminium Door available)	Sqft	15.0		
A - 11	Fabrication and fixing of partition up to 8'-0" height, aluminium frame comprising panel with both side Gypsum board as per detail Drawing (Partition type -I , J,K,L,M & N) & approved by the Client.	Sqft	176.0		
	Ceiling - fabrication & fixing of flat type 600mm x 600mm mineral fiber suspended ceiling fixed to aluminum frame work. Frame to be hung on under existing slab. Rate shall include for fixing of 10mm dia Mild steel hook bolt members centers not exceeding 1.2m and those should have two coats of anti-corrosive paint.	Sqft	140.0		



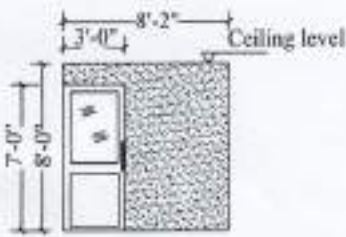
Partition type - A
(Door available)



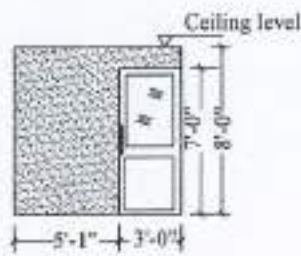
Single sash door



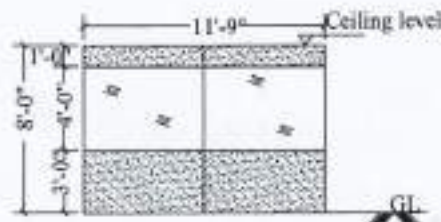
Partition type - B
(Doors & windows available)



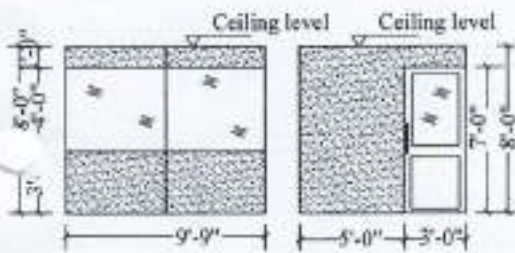
Partition type - C
(Door available)



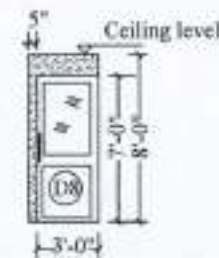
Partition type - D
(Door available)



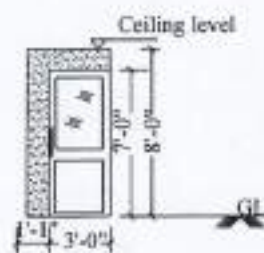
Partition type - E



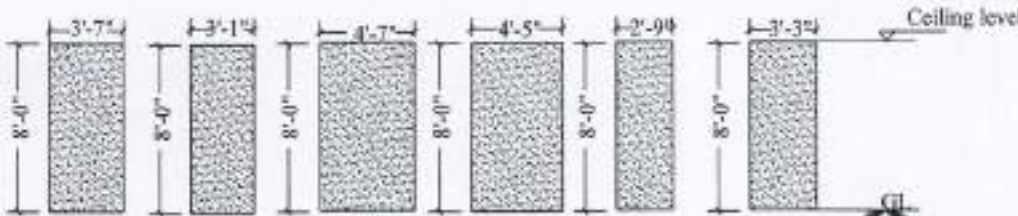
Partition type - F
(Door available)



Partition type - G



Partition type - H
(Door available)



Partition type - I
02 Nos

Partition type - J

Partition type - K

Partition type - L

Partition type - M

Partition type - N

KEY



Double side Gypsum board - White colour

ALUMINIUM PARTITION DETAILS FOR MINISTRY OF DEFENCE - DISASTER MANAGEMENT CENTER