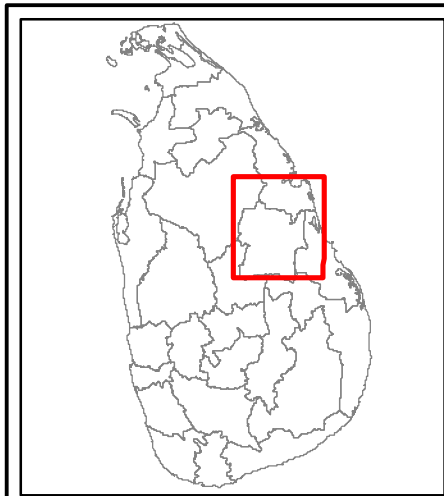
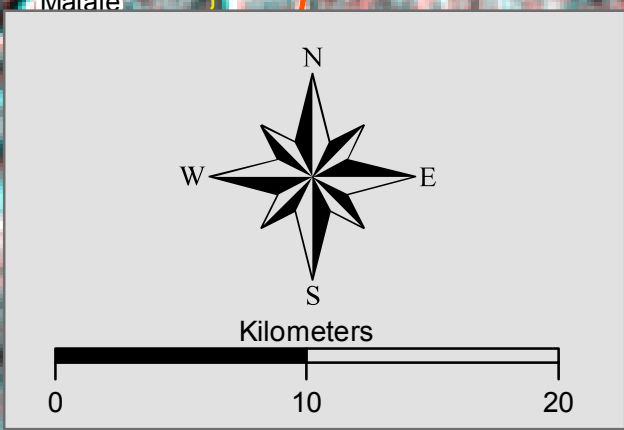
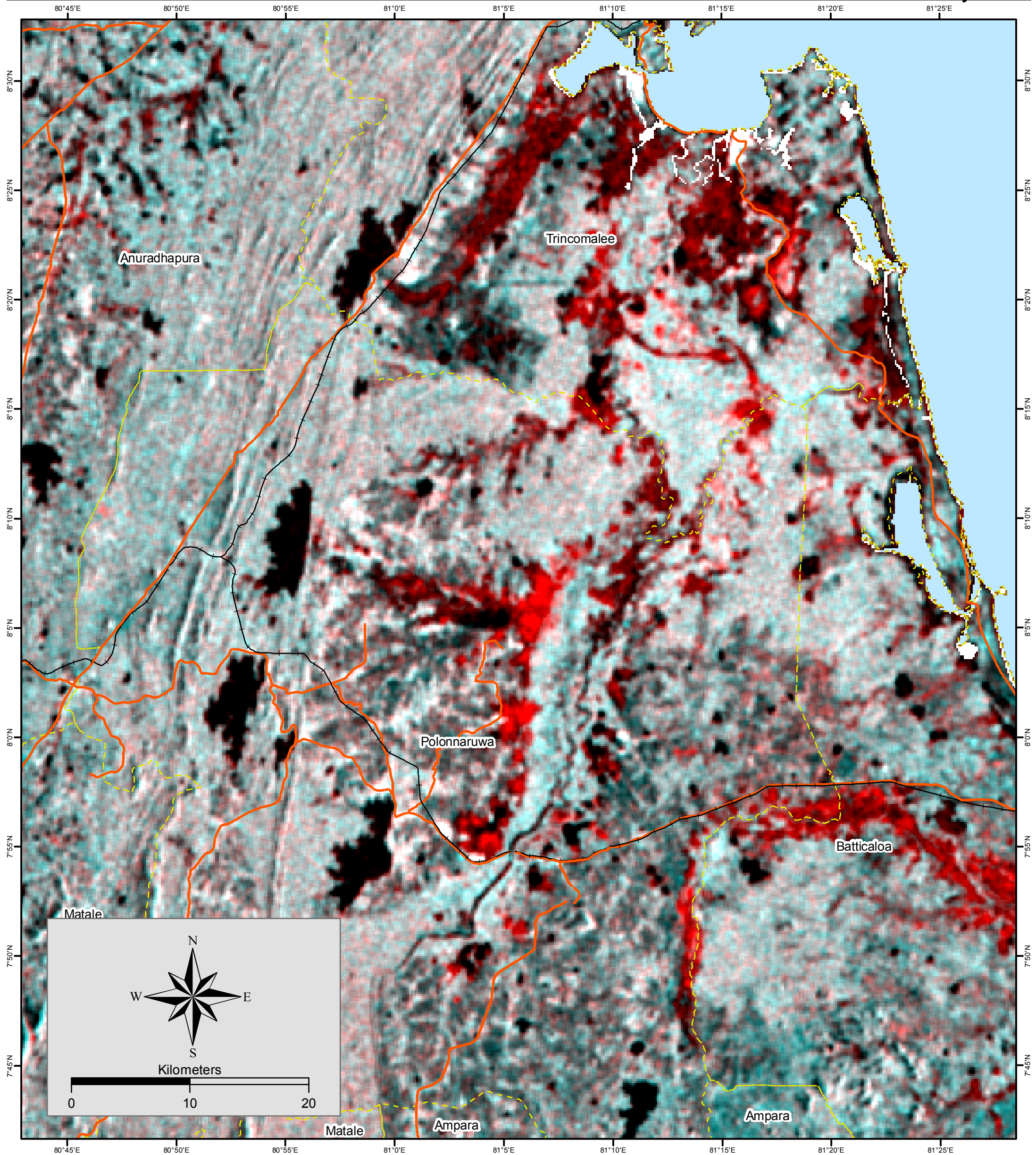

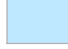

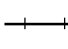



# Flood Inundation Mapping, Polonnaruwa District, Sri Lanka

Flood Inundation as at 06th February 2011



## Legend

-  Flood Inundation
-  Sea
-  Main Road
-  Rail Road
-  District Boundary

Data Source:  
ALOS Palsar 1.5 data products, by  
Japanese Aerospace Exploration  
Agency (JAXA)

Resolution: 100m ground resolution

Observation Dates :  
Flood Event - 06th February 2011  
Pre Flood - 01st January 2009

Satellite Activation by:  
Sentinel Asia Secretariat with  
cooperation of Asian Disaster Reduction  
Centre (ADRC)

Base Data:  
Department of Survey and Mapping, Sri  
Lanka.

Map Analyzed by:  
GIS Unit of Disaster Management Centre,

Ministry of Disaster Management, Sri  
Lanka

Version 1.0 - February 2011

