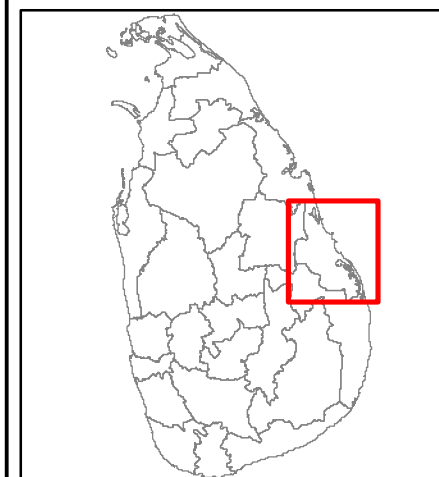
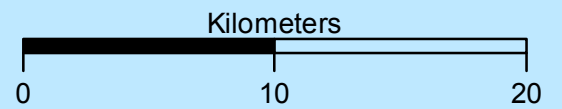
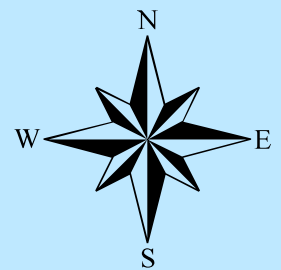
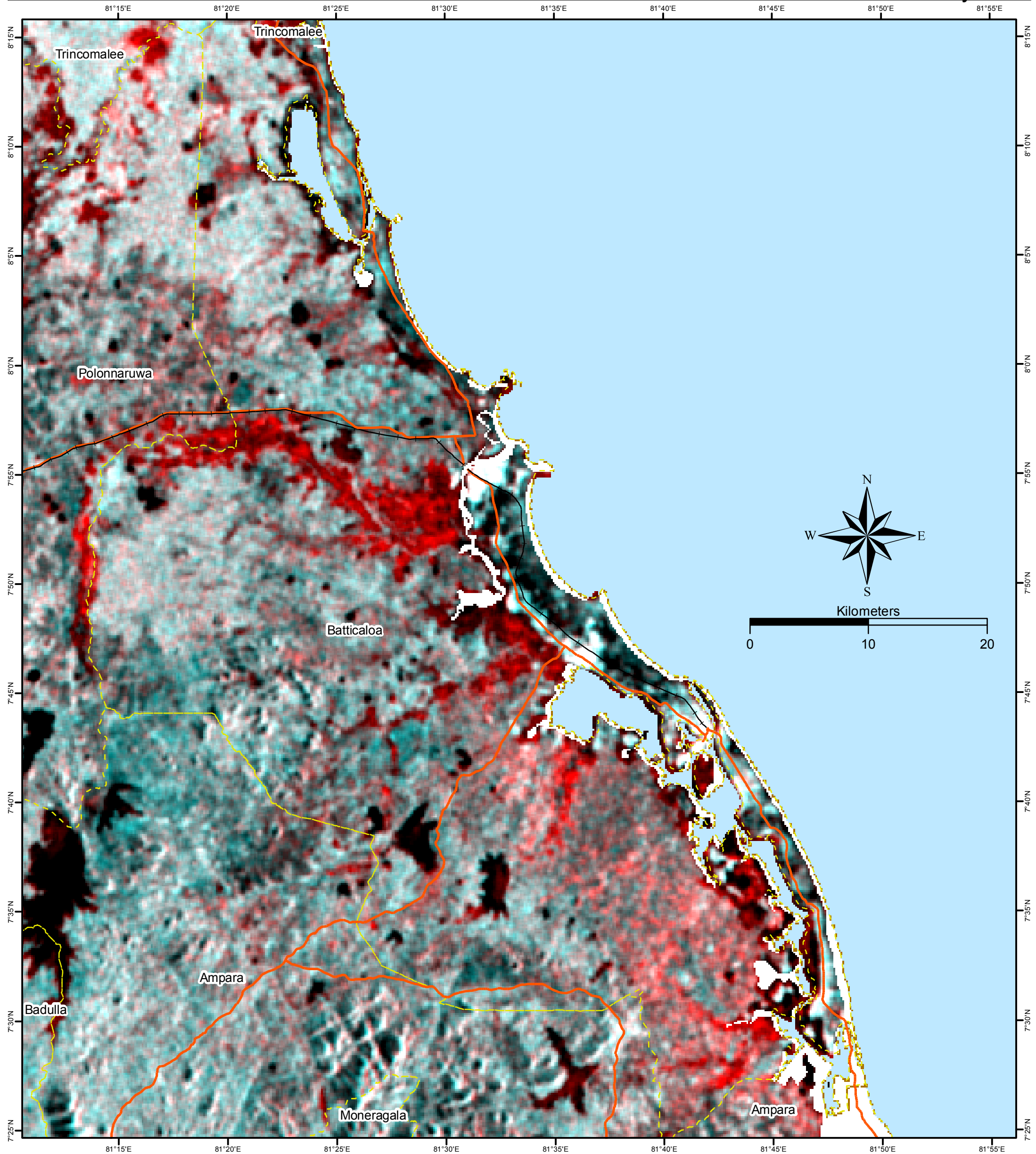


Flood Inundation Mapping, Batticaloa District, Sri Lanka

Flood Inundation as at 06th February 2011



Legend

- Flood Inundation
- Sea
- Main Road
- Rail Road
- District Boundary

Data Source:
ALOS Palsar 1.5 data products, by
Japanese Aerospace Exploration
Agency (JAXA)

Resolution: 100m ground resolution

Observation Dates :
Flood Event - 06th February 2011
Pre Flood - 01st January 2009

Satellite Activation by:
Sentinel Asia Secretariat with
cooperation of Asian Disaster Reduction
Centre (ADRC)

Base Data:
Department of Survey and Mapping, Sri
Lanka.

Map Analyzed by:
GIS Unit of Disaster Management Centre,

Ministry of Disaster Management, Sri
Lanka

Version 1.0 - February 2011

