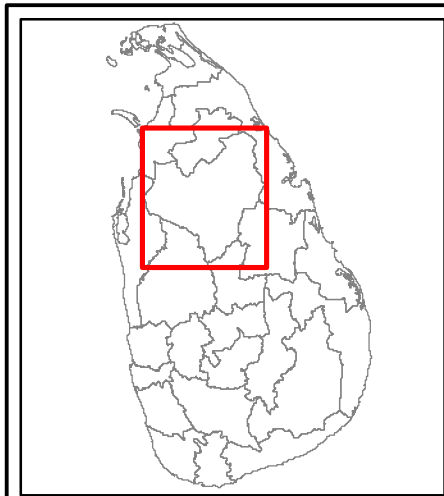
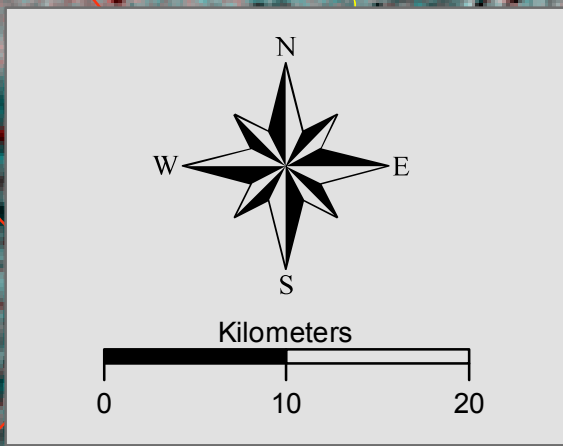
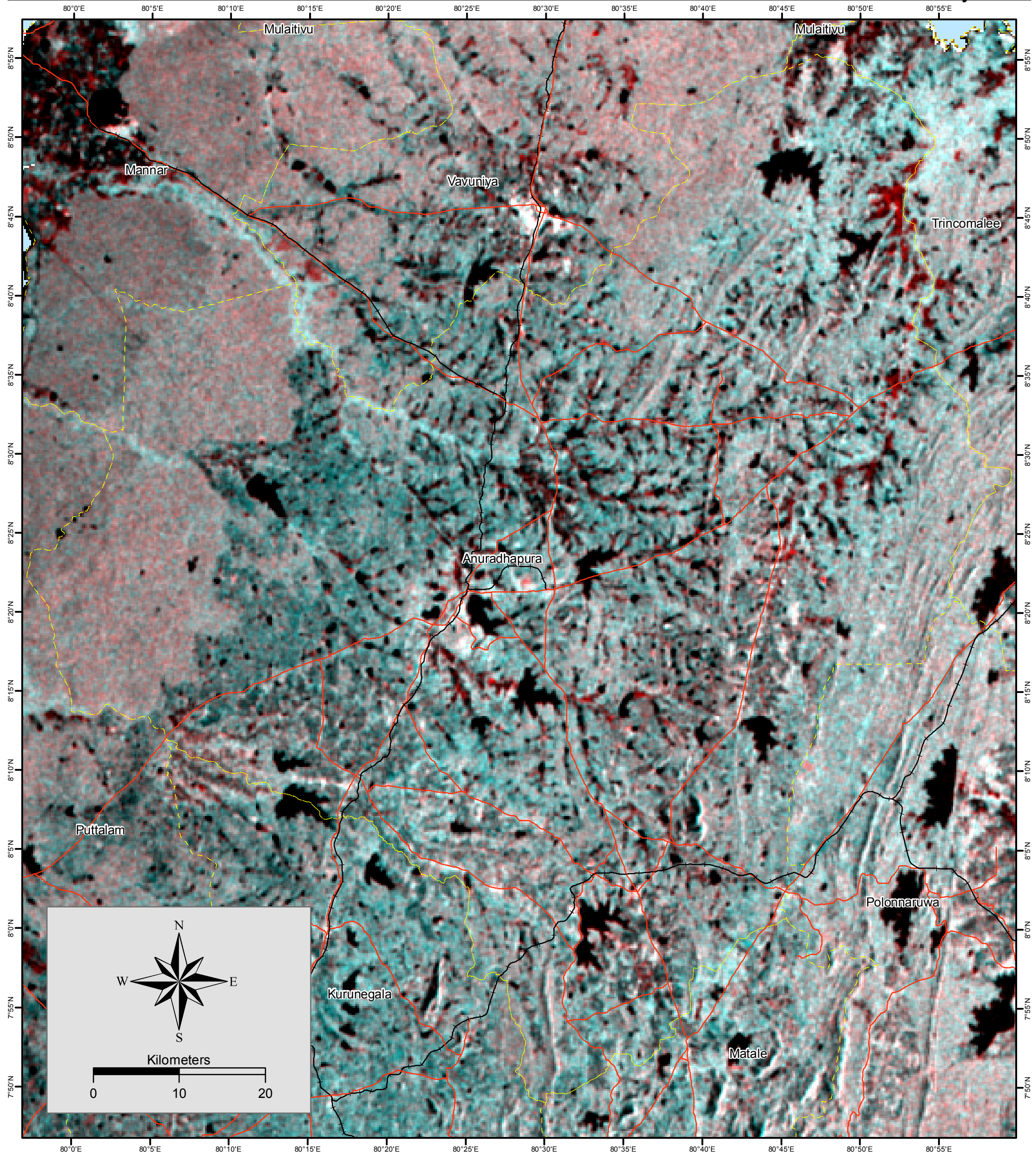


# Flood Inundation Mapping, Anuradhapura District, Sri Lanka

Flood Inundation as at 06th February 2011



### Legend

- Flood Inundation
- Sea
- Main Road
- Rail Road
- District Boundary

<p>Data Source: ALOS Palsar 1.5 data products, by Japanese Aerospace Exploration Agency (JAXA)</p> <p>Resolution: 100m ground resolution</p> <p>Observation Dates : Flood Event - 06th February 2011 Pre Flood - 01st January 2009</p> <p>Satellite Activation by: Sentinel Asia Secretariat with cooperation of Asian Disaster Reduction Centre (ADRC)</p>	<p>Base Data: Department of Survey and Mapping, Sri Lanka.</p> <p>Map Analyzed by: GIS Unit of Disaster Management Centre, Ministry of Disaster Management, Sri Lanka</p> <p>Version 1.0 - February 2011</p>
---	--